



**Exploring Careers, Utilizing
Talents – Life Planning Education
Conference 2018**

BACKGROUND



OPTICAL SENSING LIMITED JOINED HK SCIENCE PARK IN 2012

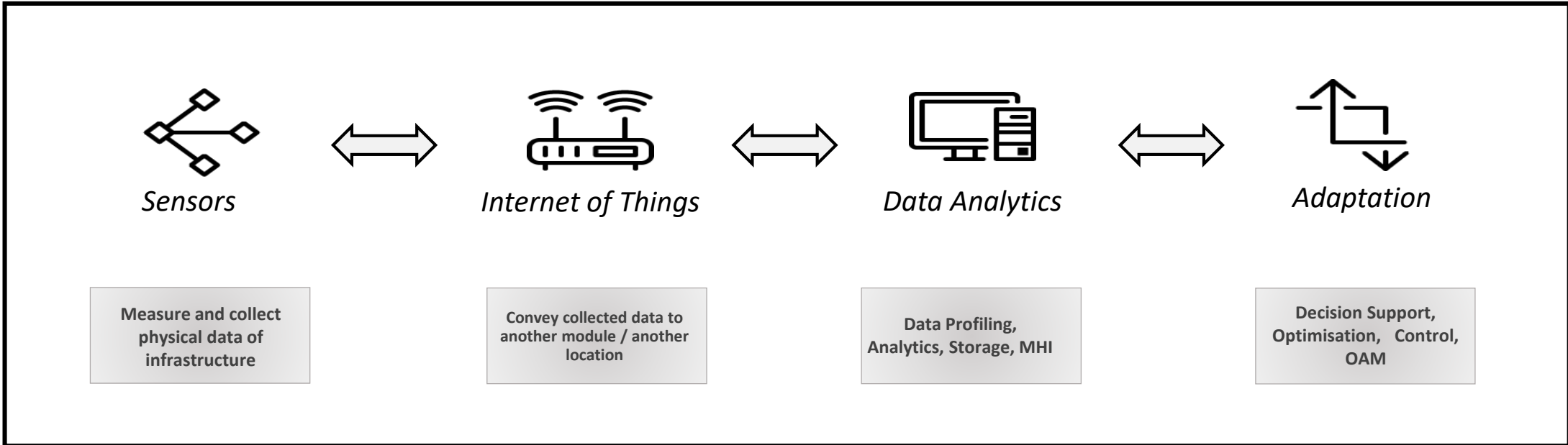
WE RESEARCH, DEVELOP, DESIGN, IMPLEMENT & OPERATE SMART CITY INFRASTRUCTURE & UTILITIES SYSTEMS

WE HAVE BEEN SUPPORTING EDUCATION BUREAU ON [生涯規劃] & 「商校合作計劃」 PROGRAMS SINCE 2016/17

EVERY QUARTER, WE TAKE IN TWO OR MORE STUDENTS TO PROVIDE THEM WITH A TWO FULL-DAY TRAINING & DEVELOPMENT PROGRAM

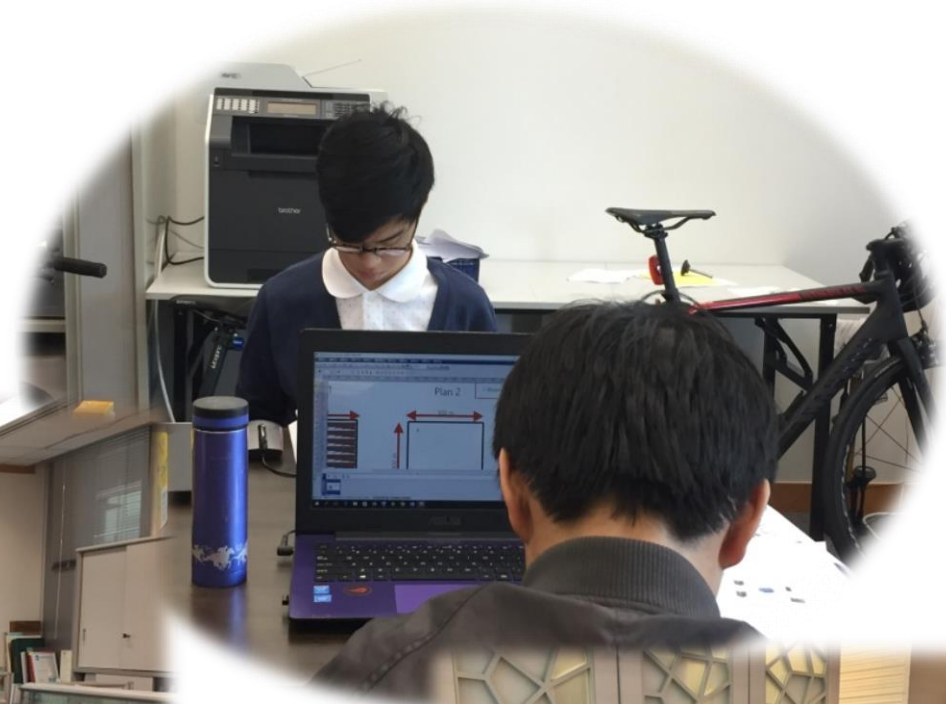
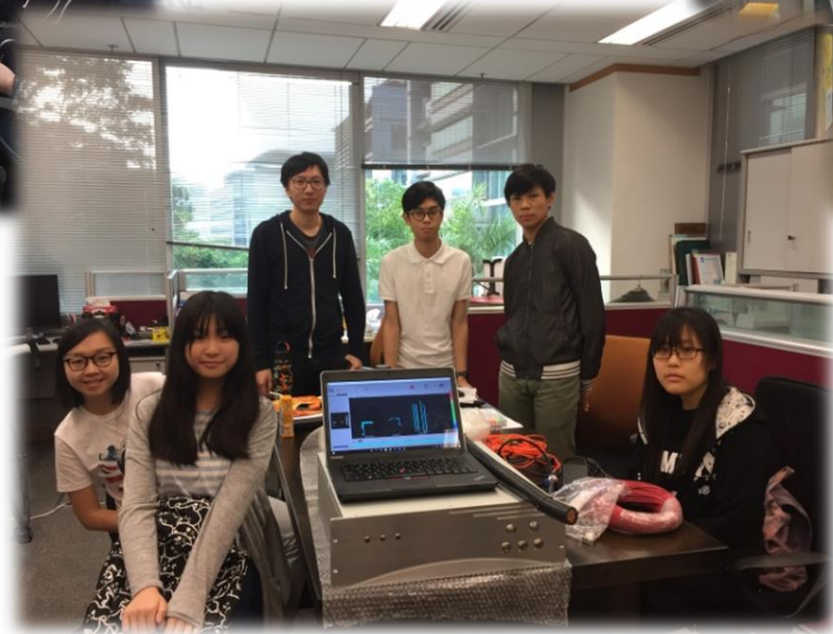
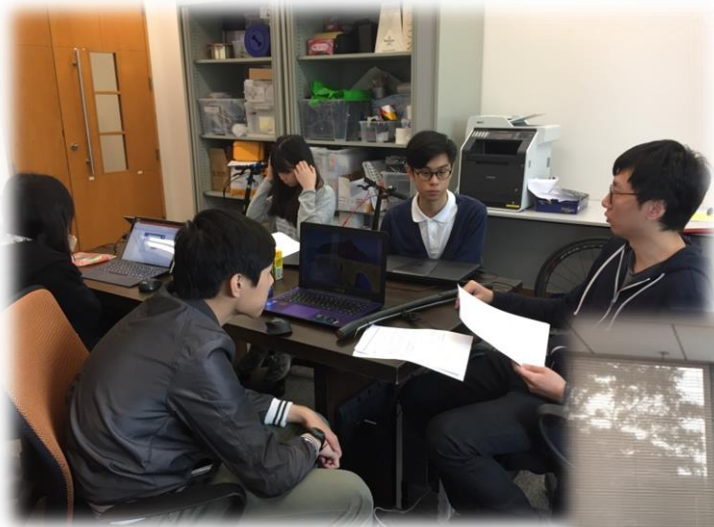
TECHNOLOGIES THAT WE RESEARCH, DEVELOP & DESIGN

OUR SMART CITY INFRASTRUCTURE SYSTEMS COMPRISE OF FOUR FUNCTIONAL GROUPS



中電怎樣以**科學園**的
技術方案確保電力源源不絕？

“CEO’s” AT WORK 1 – GAIN INSIGHTS AND ANALYSE ISSUES



“CEO’s” AT WORK 2 – PRESENT TO THE “CUSTOMERS”



CEO's AT WORK 3 - VIDEO

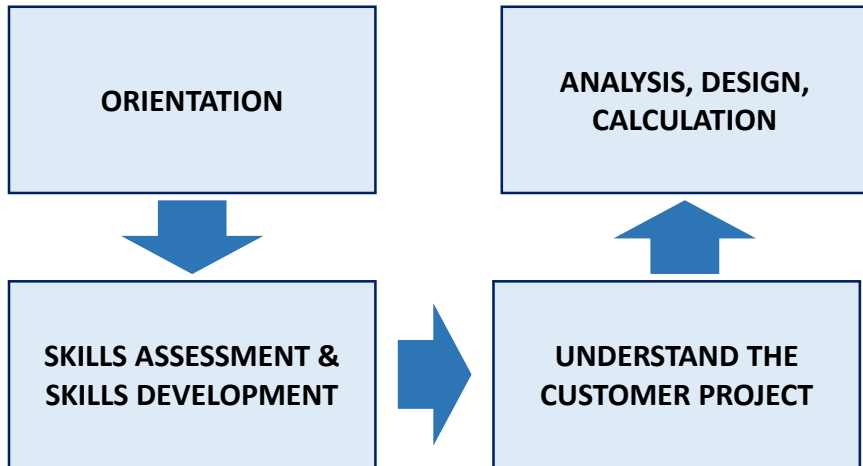
Customers requirements

- Over 40 shops ,in each shop there is a display refrigerator
- Required to keep the sushi below 3°C
- Keep it fresh
- Check the display refrigerators temperature at regular time intervals
- Show the data to supervise the problem of insufficient temperature
- Provide the monitoring at the central site that can monitor all 40 shops

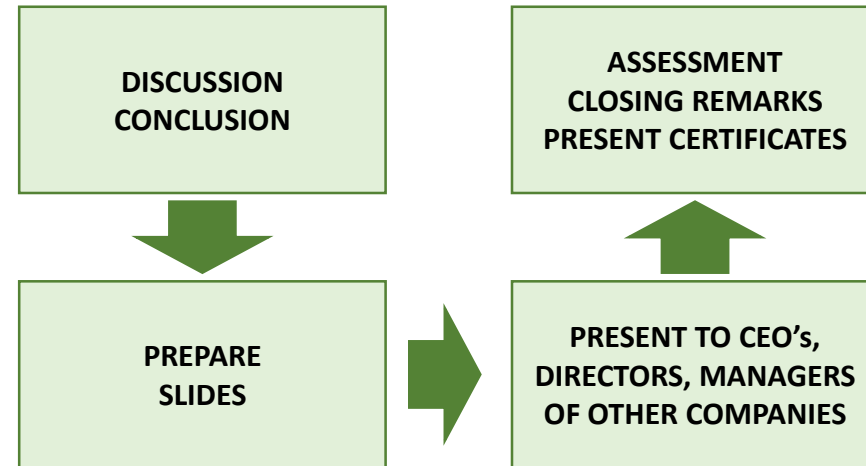
OUR STUDENT WORK EXPERIENCE PROGRAM

THE PROGRAM SPANS TWO FULL-FRIDAYS

FIRST DAY AT WORK

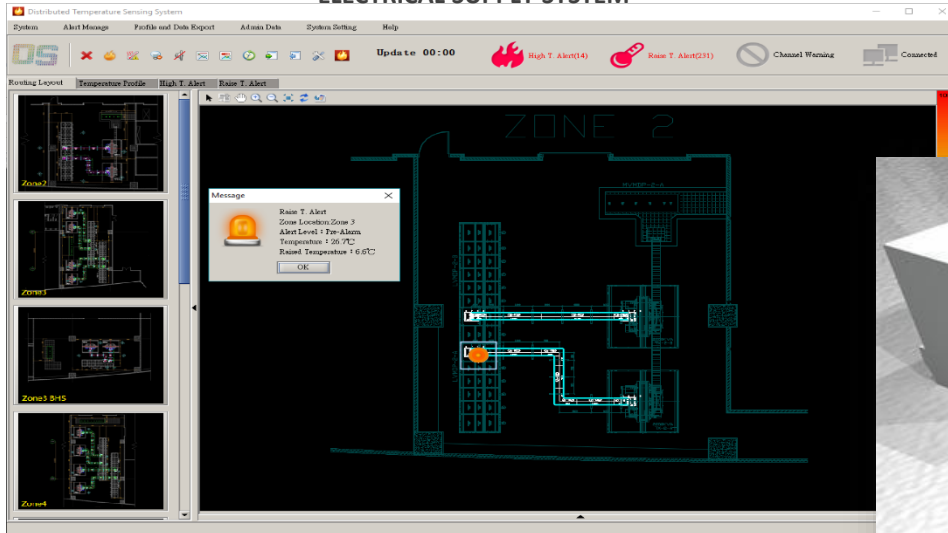


SECOND DAY AT WORK

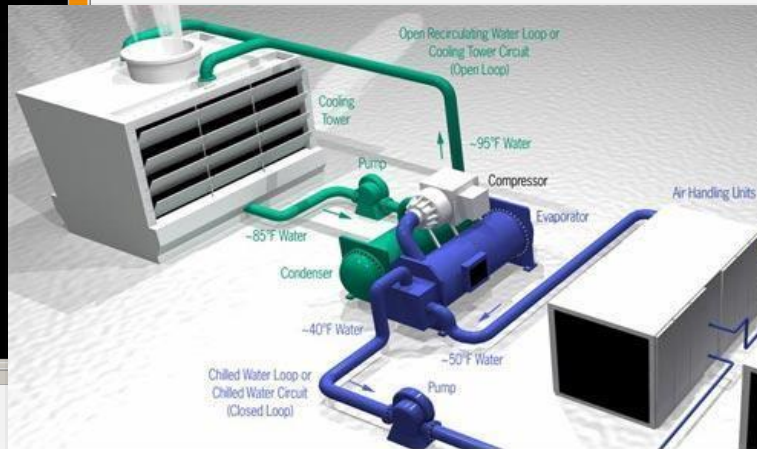


PROJECTS FOR STUDENTS

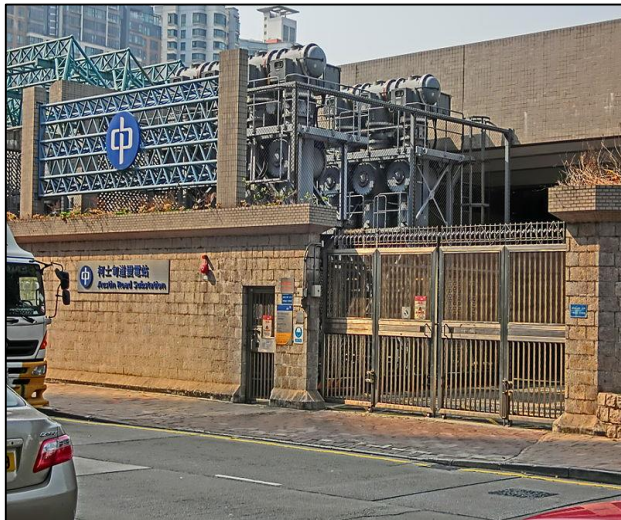
PREVENTIVE MAINTENANCE OF INBUILDING ELECTRICAL SUPPLY SYSTEM



DISTRICT COOLING SYSTEM: CHILLED WATER PIPES LEAKAGE DETECTION



DESIGN OF INDOOR POSITIONING FOR FACTORY WORKERS



THERMAL PROFILE ANALYSIS OF POWER CABLES



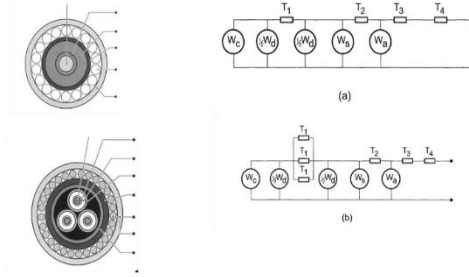
SUSHI DISPLAY FRIDGE OPERATIONS CONDITIONS MONITORING

WORK FROM STUDENTS

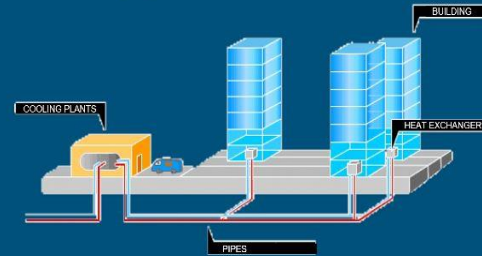
Thermal analysis of underground power cable

Ho chung hin
PLKLC

The modal----thermal networks analogs

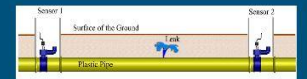


How District Cooling System works?



Source: VENNAGE – Three essential components of district cooling system

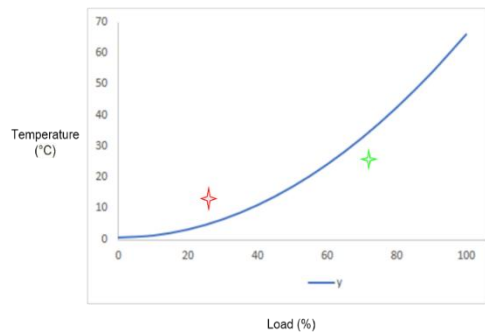
How does Acoustic Emission work



Source: Action Pumping – Underground Leak Detection

Source: MDPI

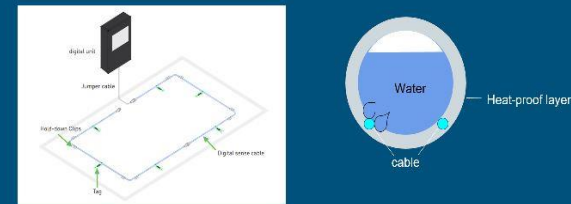
The temperature change of cable 2



conclusion

- This method is suitable and capable to measure
- The constraint of method
 - The environment factor is constant
 - The loading is constant
- Ways to enhance the accuracy
 - Introduce dynamic environment factor
 - Introduce transient state model

How does Liquid Sensing Cable work



Source: TTK – design guide

Distributed Temperature Sensing

For District Cooling System

- Allow extensive usage
- Economical for long distance
- Real-time monitoring
- Accurate data
- User-friendly

ASSESSMENT

ASPECTS	POINTS TO NOTE	ACTUAL PERFORMANCE
BASIC MANNER	Address other colleagues Use of “please”, “thank you” etc.	
VERBAL COMMUNICATIONS	Clearly introducing herself / himself Speed, tone and loudness of speaking	
SELF-CONFIDENCE	Not afraid to ask questions Not shy to point out issues	
SOCIAL SKILLS	Can relate to people socially Can express herself / himself on social aspects	
STEM SKILLS	EXCEL, PowerPoint, Programming Mathematics, Science, Materials, Environment	
WILLINGNESS TO LEARN	Level of interest in the Project Determination of finding a solution	
ORGANISATION OF INFORMATION	Quality of information / analysis Structure of slides	
RESPOND TO CHALLENGES	Way of response when challenged with difficult questions	
ACCEPT CRITICISM	During post-presentation review, attitude of intern when being criticised	

LAST BUT NOT THE LEAST – AWARD OF ACHIEVEMENT CERTIFICATES



WHERE DO THESE CEO's COME FROM

保良局羅氏基金中學

中華基督教會蒙民偉書院

宣道會陳瑞芝紀念中學

香港管理專業協會李國寶中學

沙田培英中學

聖公會曾肇添中學

聖安當女書院

匯知中學

循道中學

旅港開平商會中學

etc.

WHO WILL I BE



TO BE

OR

NOT TO BE

“Me360” DEVELOPMENT “我的360”

EVERYONE NEEDS A BALANCED DEVELOPMENT OF LIFE – LIFE PLANNING

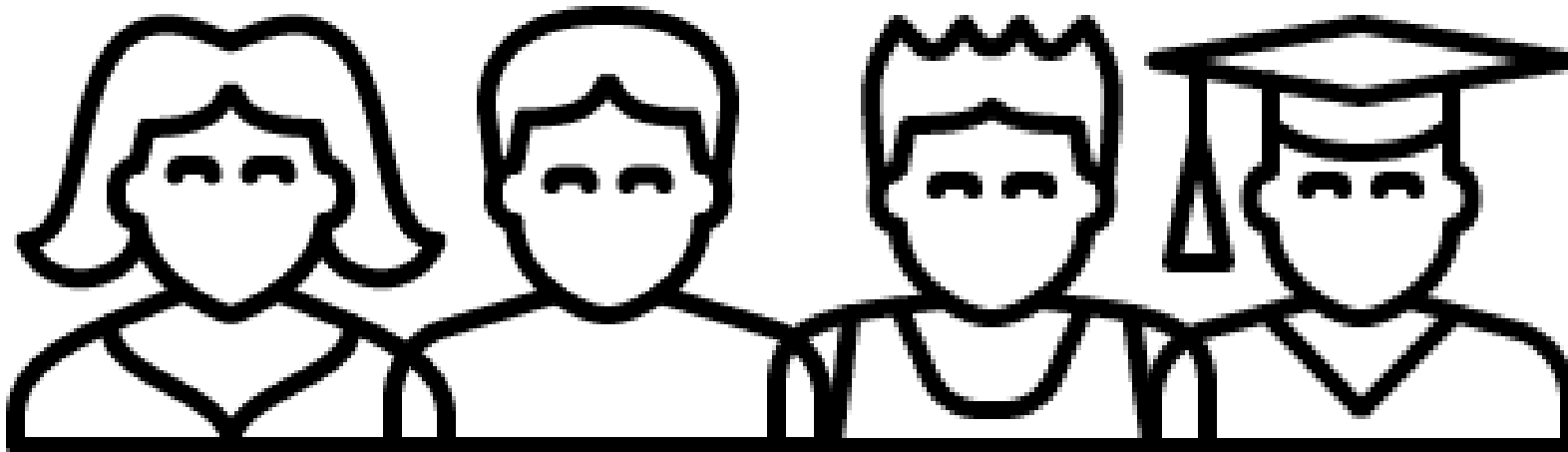
PHYSICAL

INTELLECTUAL

EMOTIONAL

SOCIAL

P I E S



CHOICES OF LIFE - MANY & ALL ARE FAR REACHING



WHO YOU ARE

IS MORE IMPORTANT THAN

WHAT YOU ARE



FIRSTLY, YOU NEED TO OVERCOME THE MOST CHALLENGING BARRIER - YOURSELF

THEN THE SKY IS THE ONLY LIMIT



ATTRIBUTES OF SUCCESSFUL PEOPLE

VISIONARY

PASSIONATE ABOUT WHAT THEY DO

NOT AFRAID OF FAILURES. “CHALLENGING” vs “DIFFICULT”

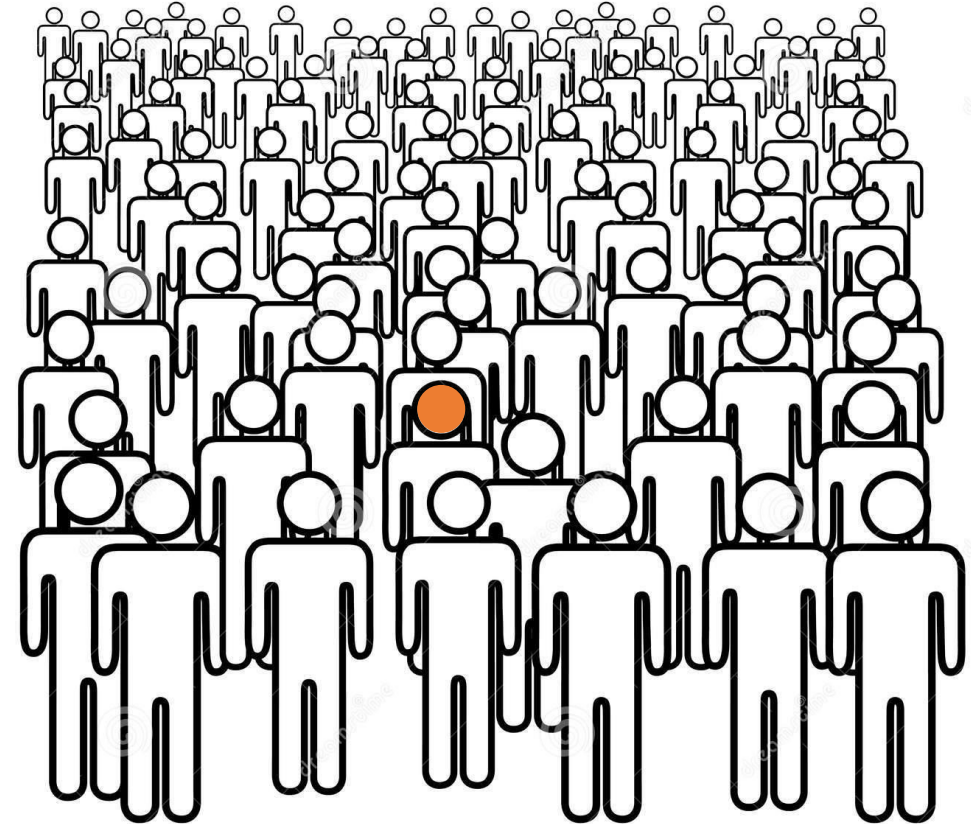
INQUISITIVE ... ALWAYS

MAINTAIN GOOD RELATIONS. BE INSPIRATIONAL TO OTHERS

USE TIME WISELY

DISCIPLINED & PERSEVERANCE

AGILE LEARNER



How Many Holes



Are In This Shirt?

如何固定一支燃燒的蠟燭 在牆壁上，使其 不會滴蠟 在桌子上



IN CASE YOU DO HAVE AN ANSWER



LIFE PLANNING IS FOR LIFE



“This is not the End

This is not even the beginning of the End

This is ONLY the End of the Beginning”

Life Planning is a LIFE LONG exercise It does not stop after your Diploma of Secondary Education

BUILD THEIR “LIFE PLANNING SKILLS” .. EMPOWER THEM TO BUILD THEIR OWN “LIVES”

給別人一條魚，你餵他一天。
教別人釣魚，你餵他一輩子。

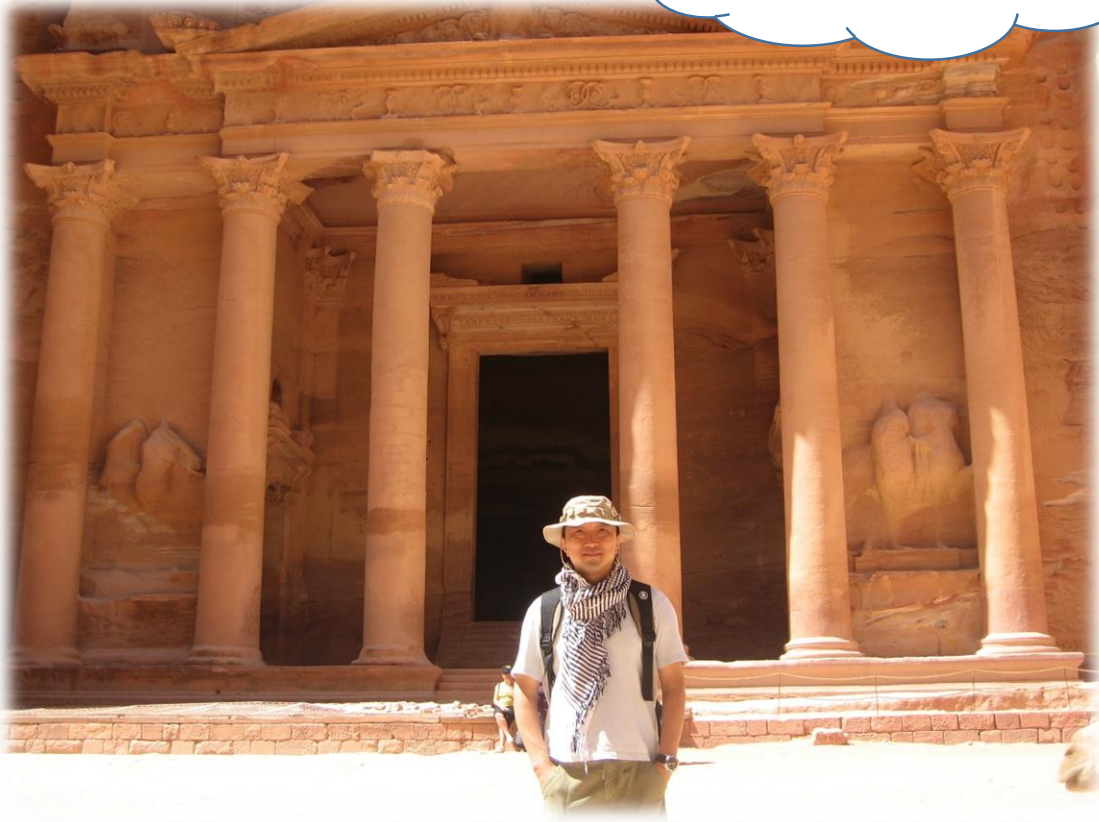
老子

Give someone a fish and you feed him for a day.
Teach someone to fish and you feed him for a lifetime.

TIME TO INTRODUCE MYSELF

Hello, I am Matthew

- BACHELOR AND MASTER DEGREES IN ELECTRONIC ENGINEERING
- CHARTERED ENGINEER
- CHIEF EXECUTIVE OFFICER OF OPTICAL SENSING LIMITED
- WORKED PREVIOUSLY AS CEO / COO / CTO OF MAJOR TELECOM COMPANIES IN MALAYSIA, VIETNAM, SRI LANKA, AUSTRALIA AND HONG KONG RESPECTIVELY
- ENJOY CREATIVE ART & PLAYING PIANO / GUITAR
- SCUBA DIVING INSTRUCTOR
- SCARE OF CATS



matthew@opticalsensing-hk.com

Mobile: 9199 1206

LASTLY I WANT YOU TO TAKE HOME THIS

PIES



QUESTIONS ?

**Exploring Careers, Utilizing Talents –
Life Planning Education Conference
2018**